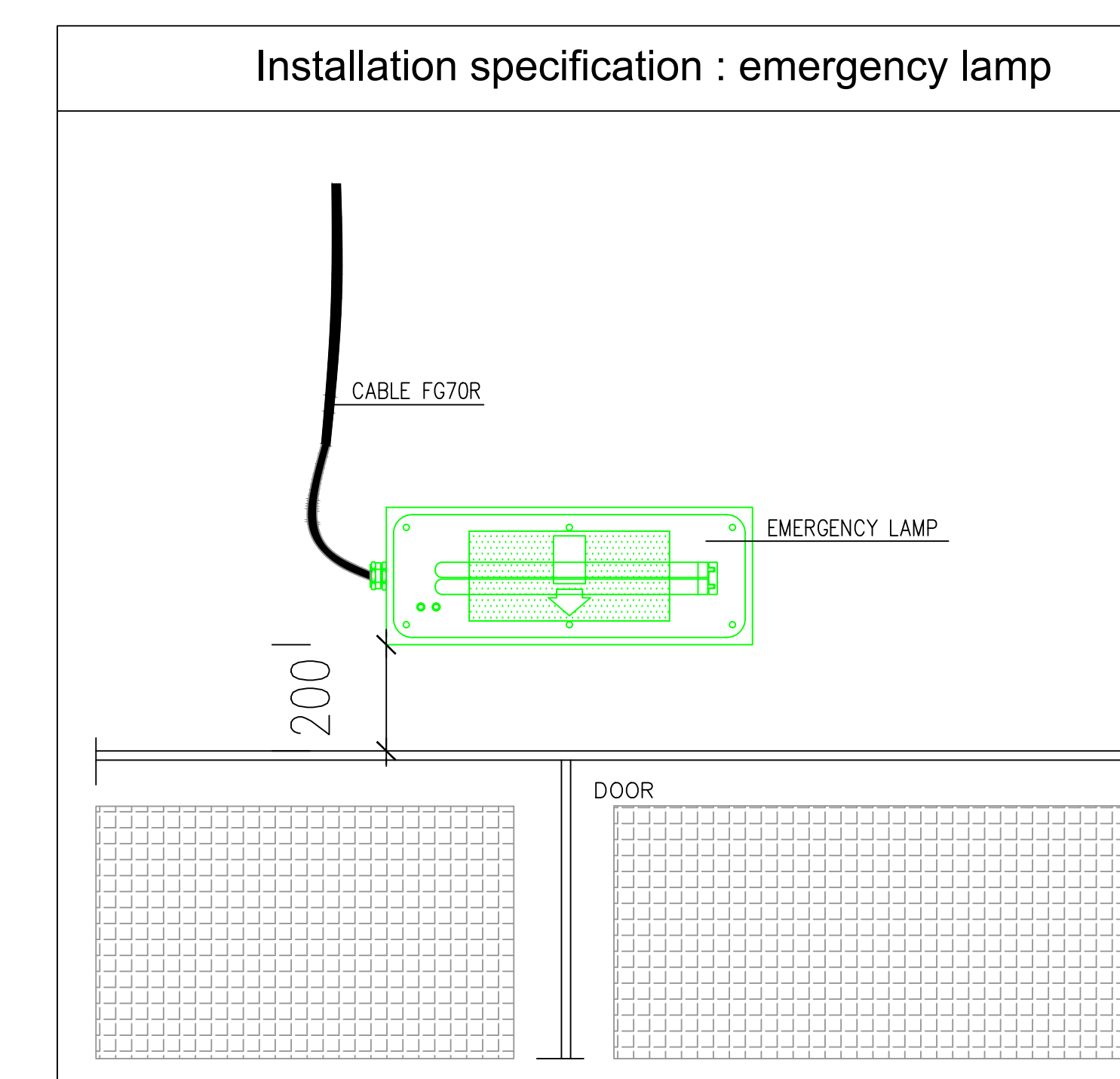
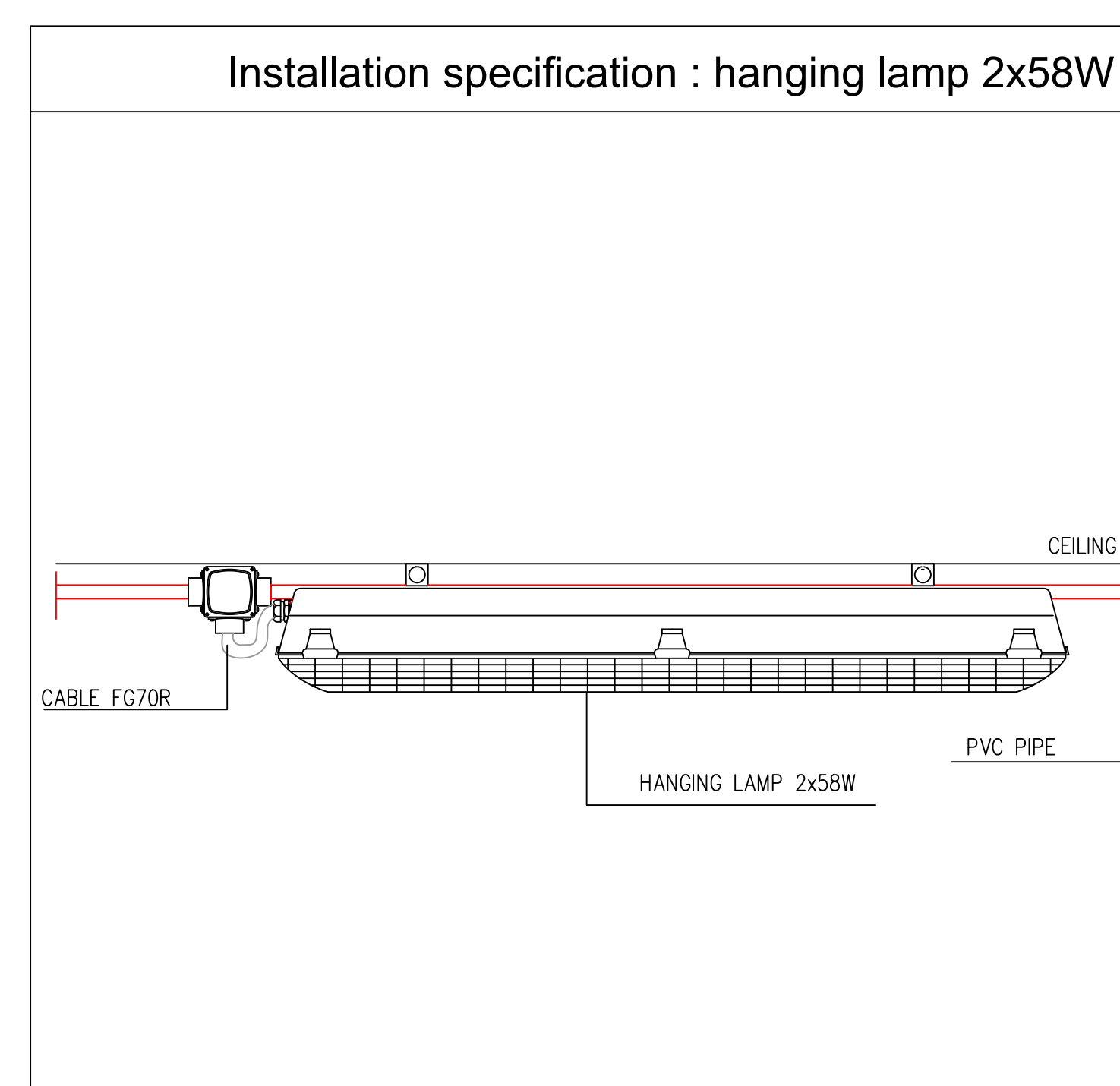
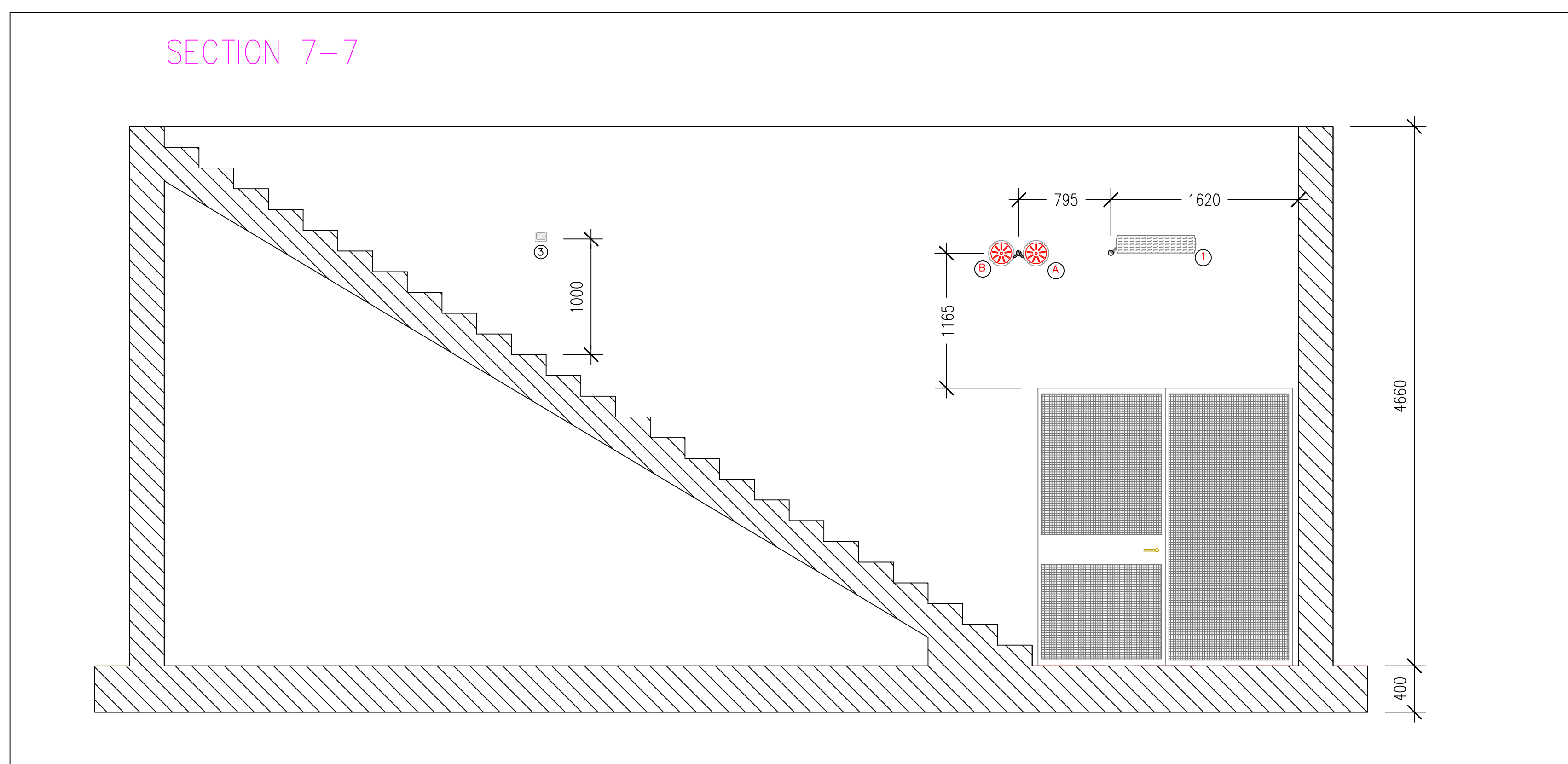
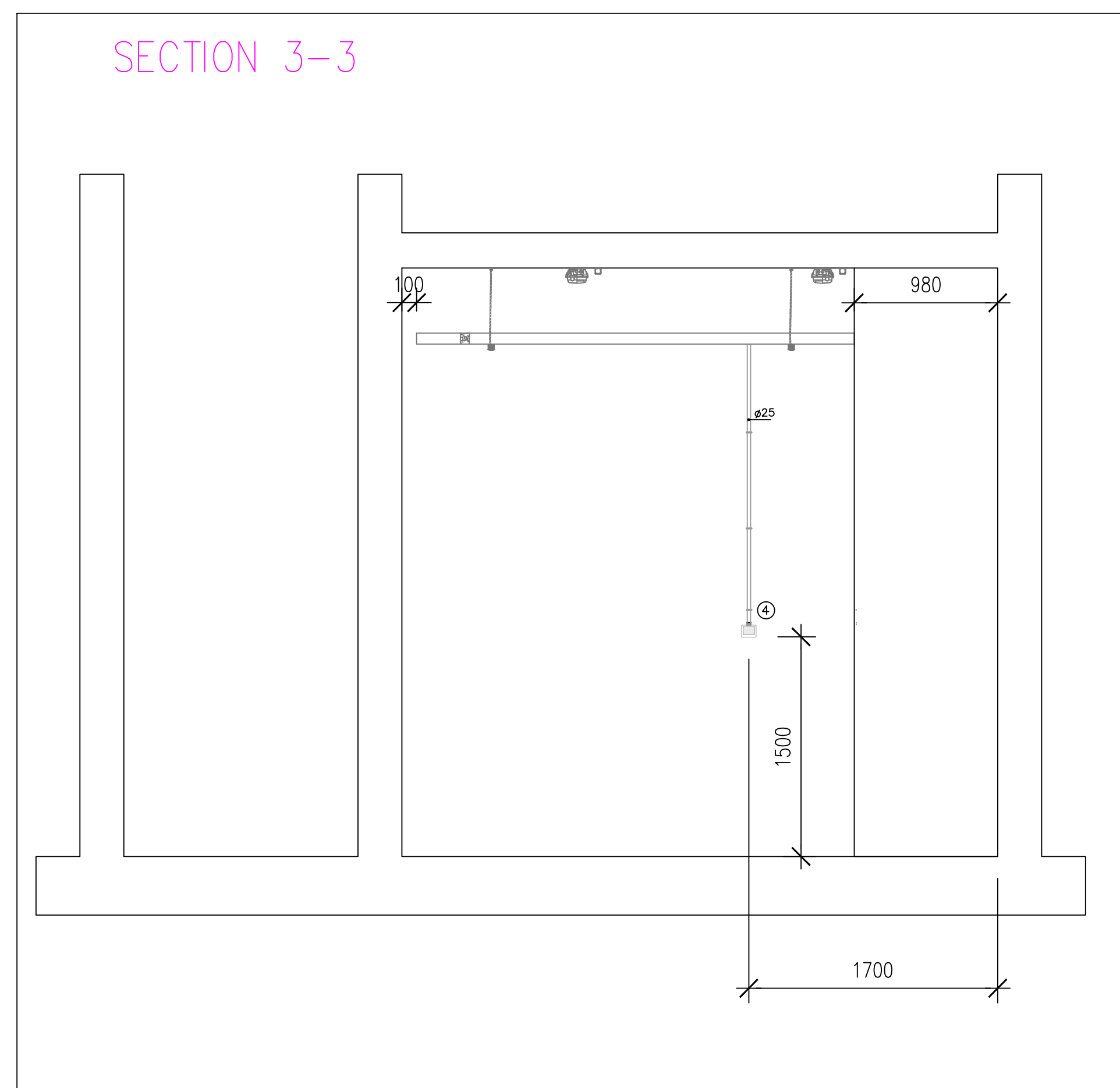
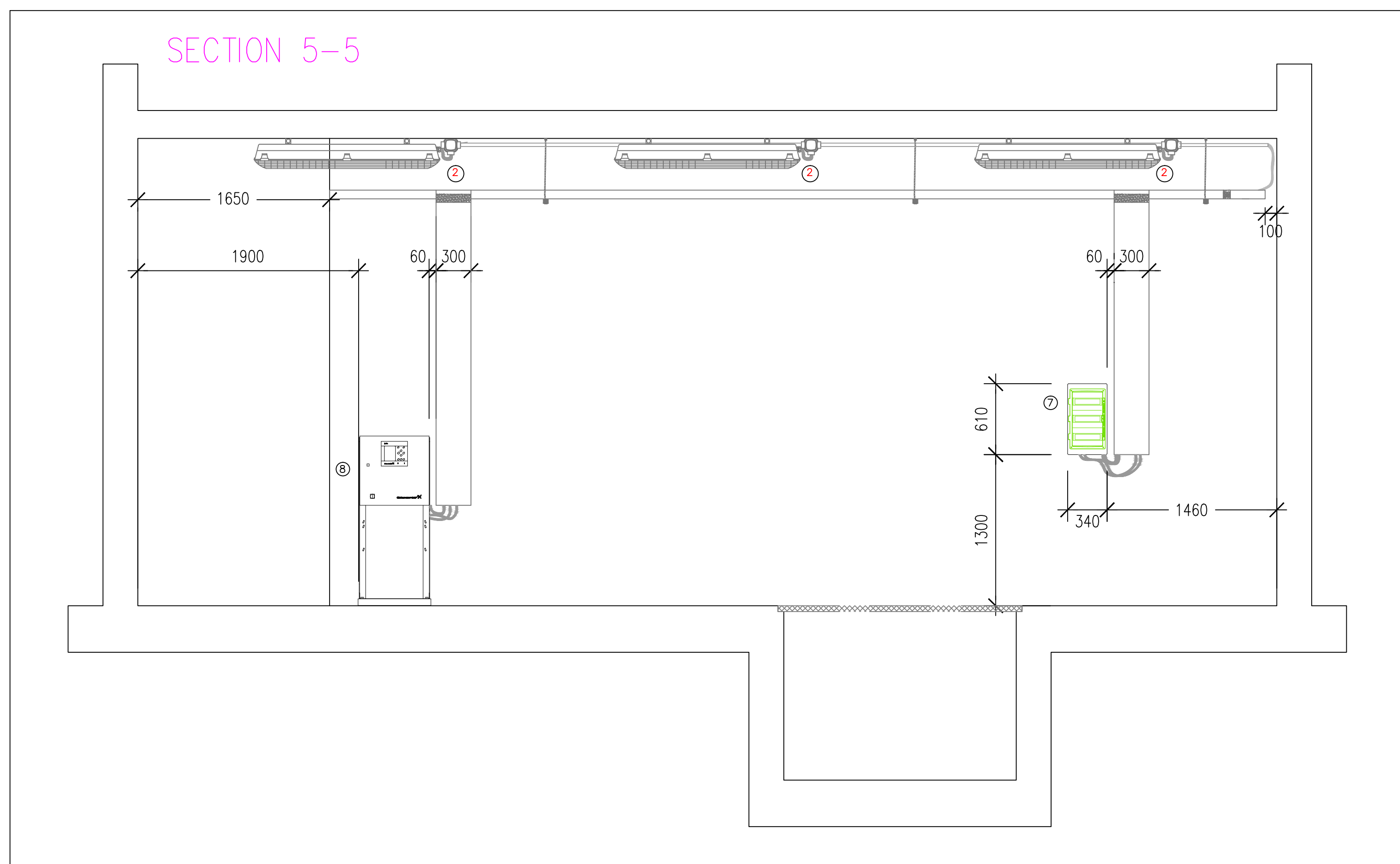
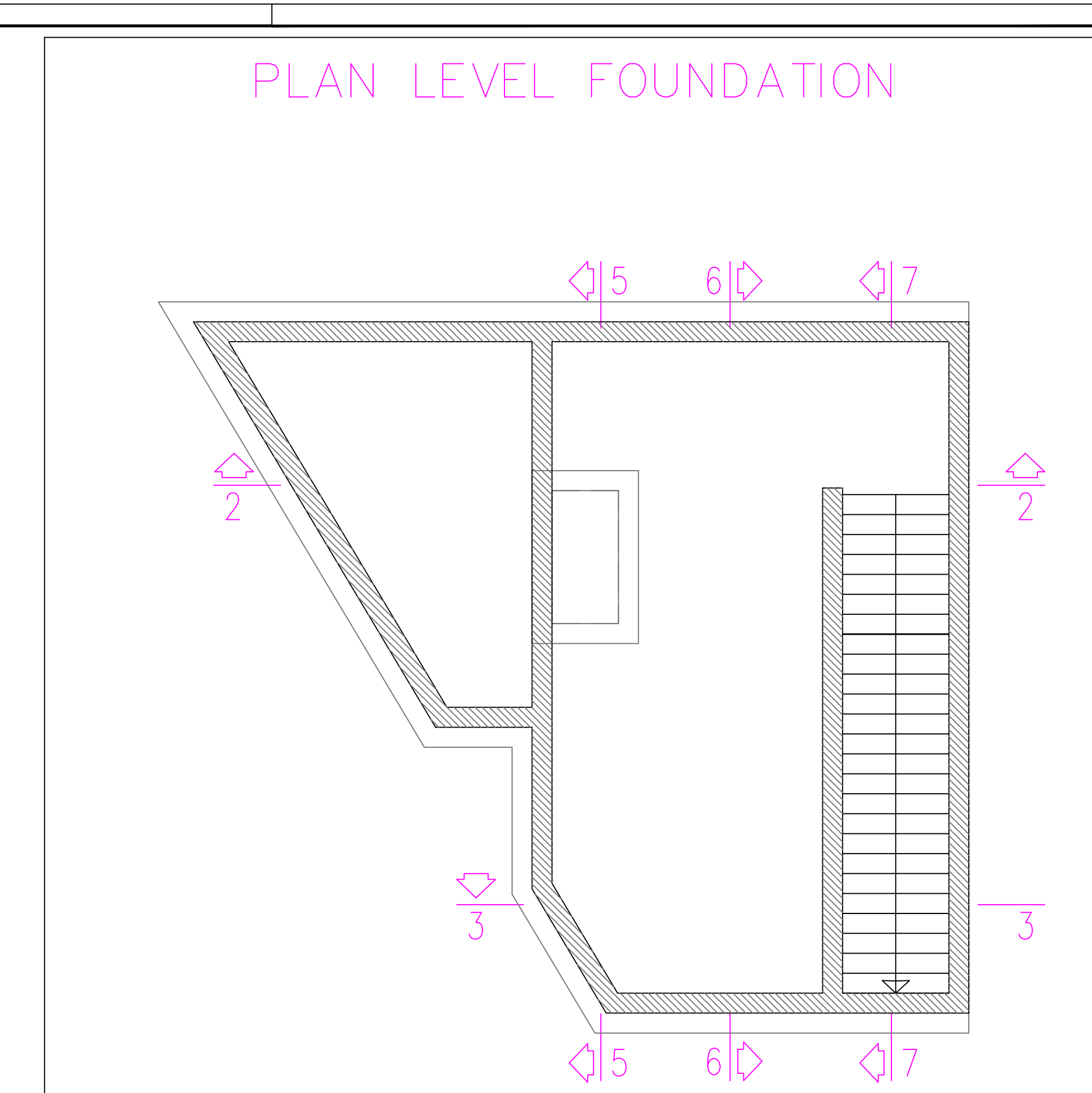
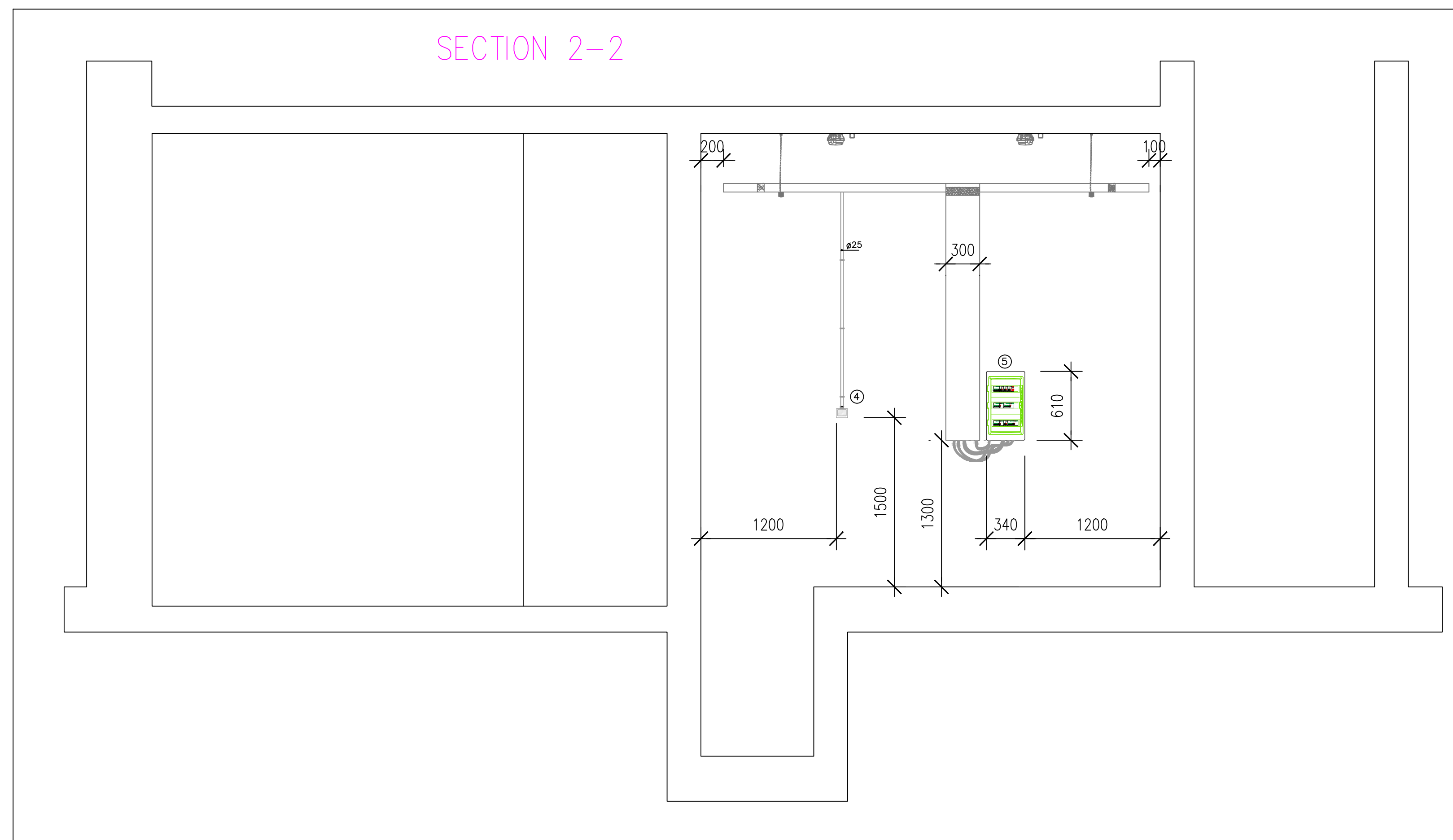
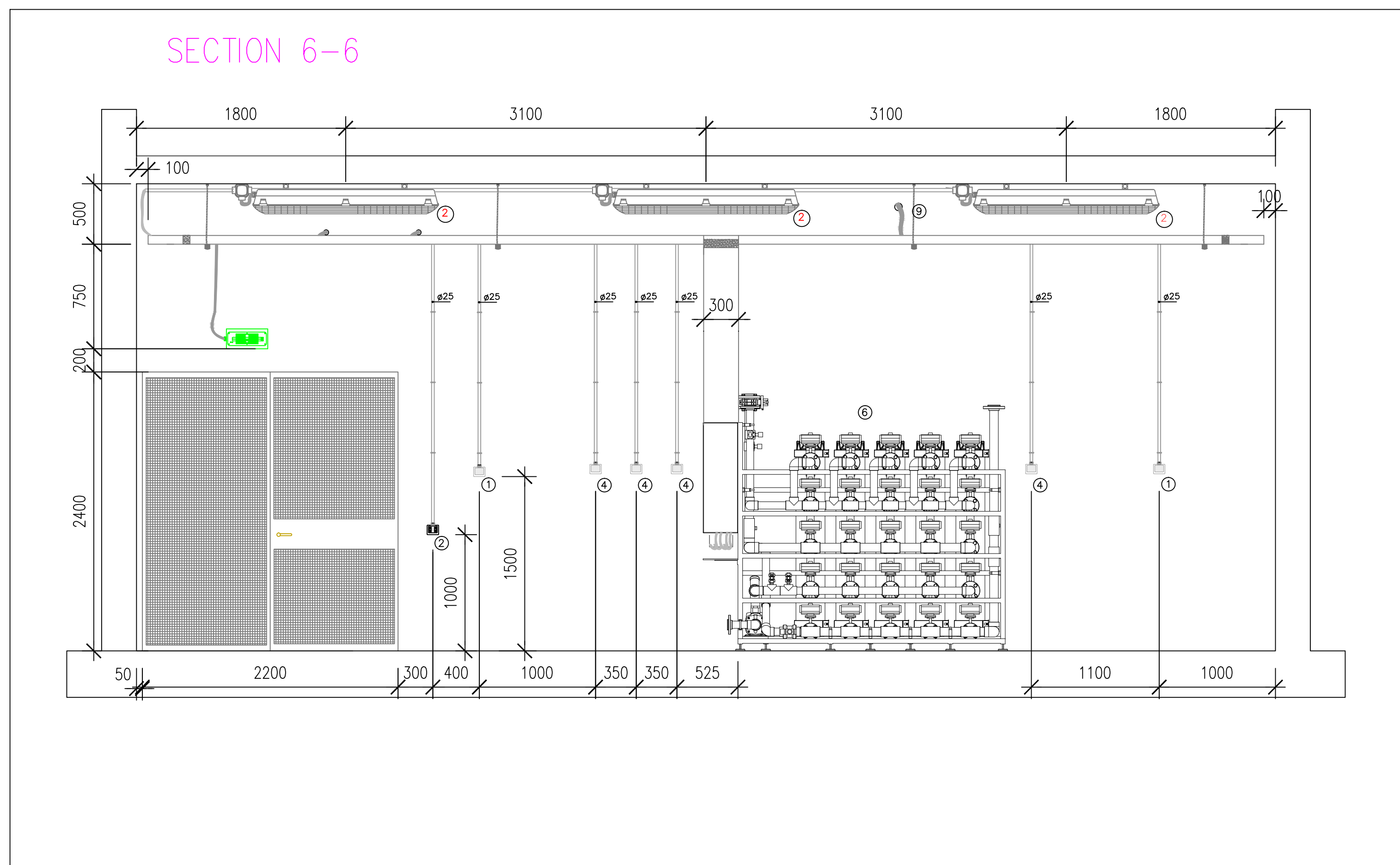


TERMINI DI LEGGE QUESTO LABORATORIO È DI NOSTRA PROPRIETÀ - È VIETATA LA RIPRODUZIONE O LA TRASMISSIONE IN OGNI FORMA, NON AUTORIZZATA, SIA PARZIALE CHE TOTALE



LEGEND SYMBOLS

Symbol	Description
∅xX	PVC pipe dimension ∅25
①	Schuko
②	Switch
③	Lighting Switch
④	Socket Schuko 230V-10/16A with switch
⑤	Electric switchboard
⑥	Ultrafiltration
⑦	Drainage pit with sump pumps
⑧	Power panel for packaged booster pump set
⑨	Cable for lighting switch
	1x24W - Emergency light
	1x18W - Wall light
	2x58W - Ceiling light
	Alarm for ultrafiltration
	Alarm for drainage

PLEASE NOTE:
 1) ALL THE HEIGHTS ARE REFERRED TO FINISHED FLOOR;
 2) THIS DRAWING IS VALID ONLY FOR ELECTRICAL SYSTEMS.

CORINTHIA HOTEL KHARTOUM

PROJECT
 Water potabilization plant of Khartoum

PROPERTY
 Corinthia Hotel Khartoum

PROJECT PHASE
 SHOP DRAWINGS

OBJECT
 ELECTRIC SYSTEM LAYOUT - INSTALLATION SPECIFICATION

PROJECT ELECTRIC SYSTEM
 STC ENGINEERING
 ING. CESARE ORSINI
 VIA DEL FAGGIANO N°156
 40132 BOLOGNA (BO)
 Tel. 051 8197764
 Fax 051 0922361
 email: info@stcengineering.it

REV.	DATE	DESCRIPTION	CONTROL
00	31/07/2013	INSTALLATION SPECIFICATION	ORSN
01	04/04/2015	INSTALLATION SPECIFICATION	ORSN
02	15/04/2015	INSTALLATION SPECIFICATION	ORSN

DATE
 SEPTEMBER 2013
SIZE
 A0 PAPER SIZE (1189x841 mm)